



TIIG

INJURY SURVEILLANCE IN THE NORTH WEST OF ENGLAND

Injury attendances to Manchester Royal Infirmary Emergency Department

October 2012 to September 2013

This report summarises recorded injury attendances to Manchester Royal Infirmary Emergency Department (ED) between October 2012 and September 2013.

Between October 2012 and September 2013 there were 24,206 injury attendances to Manchester Royal Infirmary ED. Males accounted for close to six in ten (58%) of all attendances. The month with the highest attendances was October (n=2,482) and the lowest was September (1,460) ([Figure 1](#)). The majority (72%) of attendances were recorded as other accident; Road traffic collision (RTC) accounted for the highest proportion (10%) of specified injury groups followed by sports injury and assaults (both 8%) ([Table 1](#)).

For all injuries, the highest proportion of attendances were for persons aged 20-34 (36%) and 5-19 (23%) ([Figure 2](#)). Close to six in ten (58%) of assault attendees were aged 20-34. Forty four per cent of RTC attendees were aged 20-34. Over six in ten (62%) of sports injury attendees were aged 20-34 ([Figure 3](#)).

[Table 2](#) shows the arrival methods of attendances at Manchester Royal Infirmary ED. Eight in ten (80%) arrived by means other than an ambulance, while one in five (20%) arrived by ambulance.

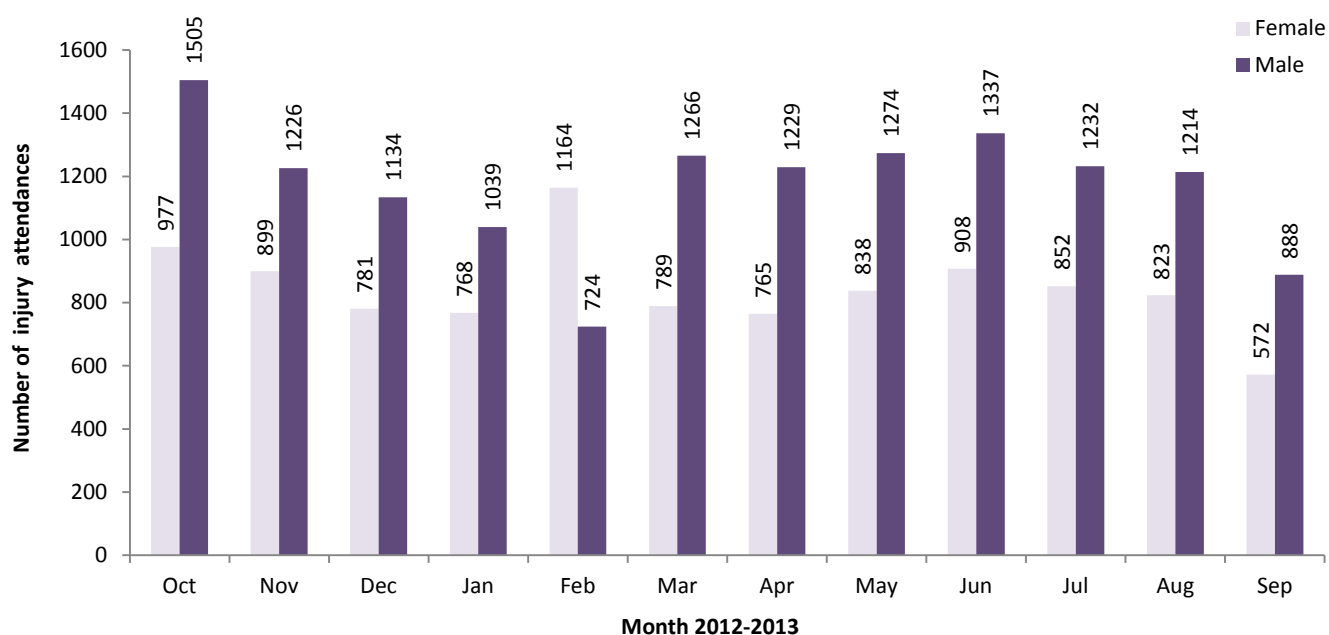
The disposal of a patient can give an indication of the severity of the injuries sustained. Over four in ten (44%) of attendees were discharged, almost a third

(32%) were referred and 12% were admitted ([Table 3](#)). Almost six in ten (58%) of RTC attendees were discharged while 9% were admitted. Close to four in ten (37%) of deliberate self-harm (DSH) attendees were admitted ([Table 4](#)).

[Table 5](#) shows the ethnicity of attendees to Manchester Royal Infirmary ED. Over half (52%) were white, 8% were Pakistani and 7% were black.

[Table 6](#) presents data for assault attendees to Manchester Royal Infirmary ED. Almost three quarters (73%) of assault attendances were male and 58% were aged between 20 and 34 years.

Figure 1: Manchester Royal Infirmary ED: Total injury attendances by gender and month, October 2012 to September 2013*



*There were two attendances where gender was recorded as unknown

Table 1: Manchester Royal Infirmary ED: Total injury attendances by injury group and month, October 2012 to September 2013

Injury group	Oct	Nov	Dec	Jan	Feb	Mar	Apr	May	Jun	Jul	Aug	Sep	Total	%
Other accident	1772	1417	1382	1261	1312	1455	1478	1536	1668	1562	1492	1040	17375	72
RTC	248	286	221	190	196	195	153	183	231	208	215	154	2480	10
Sports injury	263	216	116	138	194	174	202	200	136	141	121	118	2019	8
Assault	166	168	158	165	138	181	123	144	160	136	174	125	1838	8
DSH	33	38	38	53	48	50	39	49	51	37	35	23	494	2
Total	2482	2125	1915	1807	1888	2055	1995	2112	2246	2084	2037	1460	24206	100

Figure 2: Manchester Royal Infirmary ED: Total injury attendances by age group and month, October 2012 to September 2013

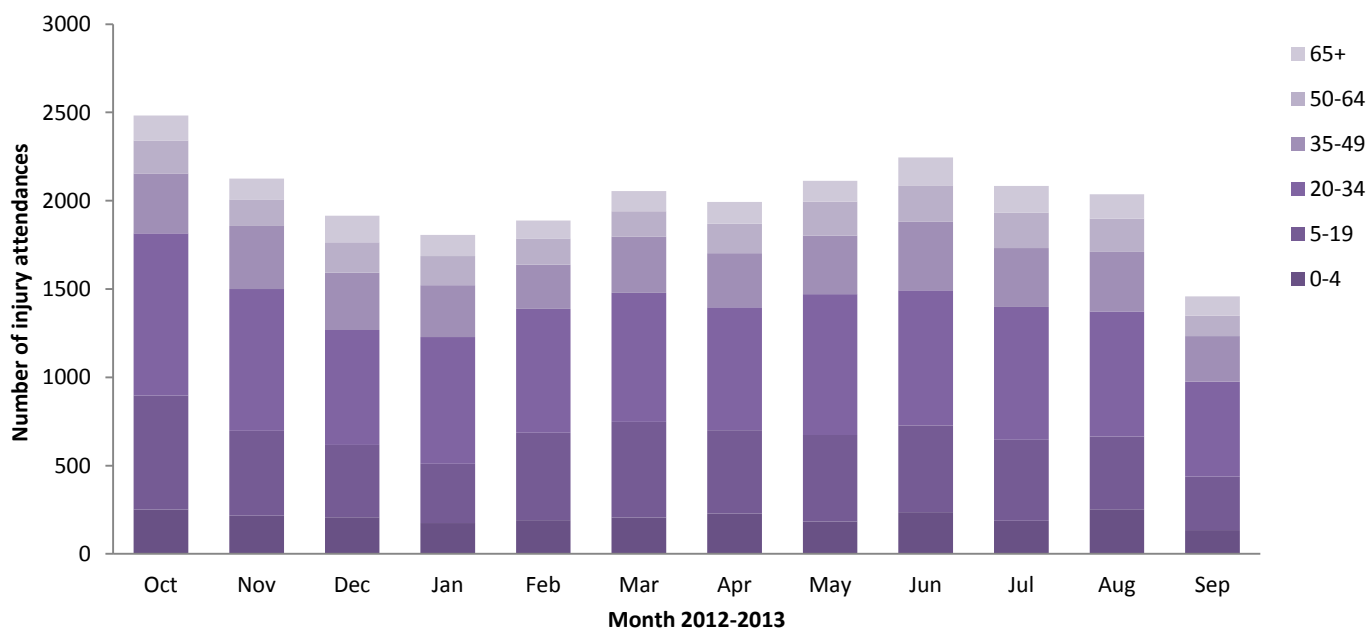


Figure 3: Manchester Royal Infirmary ED: Total injury attendances by age group and injury group (excluding other injury), October 2012 to September 2013

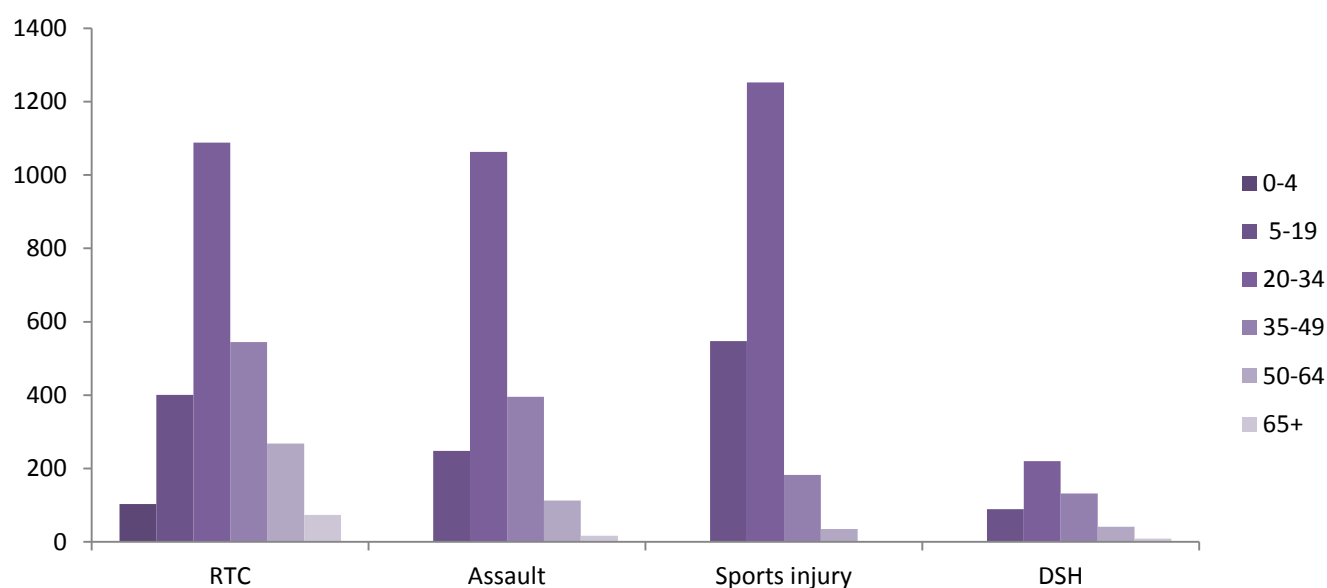


Table 2: Manchester Royal Infirmary ED: Total injury attendances by mode of arrival and month, October 2012 to September 2013

Arrival mode	Oct	Nov	Dec	Jan	Feb	Mar	Apr	May	Jun	Jul	Aug	Sep	Total	%
Other	2007	1661	1473	1449	1591	1664	1647	1707	1800	1639	1571	1193	19402	80
Ambulance	475	464	442	358	297	391	348	405	446	445	466	267	4804	20
Total	2482	2125	1915	1807	1888	2055	1995	2112	2246	2084	2037	1460	24206	100

Table 3: Manchester Royal Infirmary ED: Total injury attendances by method of disposal and month, October 2012 to September 2013

Disposal	Oct	Nov	Dec	Jan	Feb	Mar	Apr	May	Jun	Jul	Aug	Sep	Total	%
Discharged	1163	959	820	788	914	935	888	842	1001	841	929	662	10742	44
Referral/follow up	775	663	616	552	607	661	646	740	724	741	637	443	7805	32
Admitted	263	248	262	189	159	244	227	278	265	254	275	175	2839	12
Other	281	255	217	278	208	215	234	252	256	248	196	180	2820	12
Total	2482	2125	1915	1807	1888	2055	1995	2112	2246	2084	2037	1460	24206	100

Table 4: Manchester Royal Infirmary ED: Total injury attendances by method of disposal and injury group (excluding other injury), October 2012 to September 2013

Disposal	RTC		Assault		DSH		Sports injury		Total	
	n	%	n	%	n	%	n	%	n	%
Discharged	1428	58	714	39	102	21	848	42	3092	45
Referral/follow-up	515	21	502	27	123	25	877	43	2017	30
Admitted	211	9	275	15	182	37	84	4	752	11
Other	326	13	347	19	87	18	210	10	970	14
Total	2480	100	1838	100	494	100	2019	100	6831	100

Table 5: Manchester Royal Infirmary ED: Total injury attendances by ethnicity and month, October 2012 to September 2013

Ethnicity	Oct	Nov	Dec	Jan	Feb	Mar	Apr	May	Jun	Jul	Aug	Sep	Total	%
White	1652	1310	1196	924	744	791	806	803	859	1273	1251	892	12501	52
Not known	8	19	20	350	664	741	608	738	751	49	53	25	4026	17
Pakistani	213	204	191	108	120	137	156	146	182	181	164	124	1926	8
Black	186	181	154	137	105	111	114	128	142	166	187	128	1739	7
Other ethnic group	181	188	138	113	81	99	133	115	90	189	162	119	1608	7
Mixed	69	60	57	59	58	45	57	58	68	78	68	53	730	3
Asian other	71	52	64	45	29	36	29	39	45	56	65	54	585	2
Indian	40	36	33	28	25	19	27	23	25	35	27	24	342	1
Not stated	9	19	26	27	37	48	30	35	46	16	13	12	318	1
Chinese	37	33	20	8	8	13	13	16	17	21	23	18	227	1
Bangladeshi	16	23	16	8	17	15	22	11	21	20	24	11	204	1
Total	2482	2125	1915	1807	1888	2055	1995	2112	2246	2084	2037	1460	24206	100

Table 6: Manchester Royal Infirmary ED: Total assault attendances by age group and gender, October 2012 to September 2013^{1,2}

Gender	Assault attendees (n=1,838)		All injuries (n=24,206)
	n	%	%
Female	495	27	42
Male	1342	73	58
Age group			
0 - 4	0	0	10
5 - 19	248	13	23
20 - 34	1063	58	36
35 - 49	396	22	16
50 - 64	113	6	8
65 plus	17	1	6

Published November 2013
 Jennifer Brizell (TIIG researcher)
 Centre for Public Health, Faculty of Education, Health and Community, Liverpool John Moores University
 2nd Floor, Henry Cotton Campus, 15-21 Webster Street, Liverpool, L3 2ET
 Tel: 0151 231 4500 Email: j.s.brizell@ljmu.ac.uk
 Website: www.tiig.info (please note all data requests should be made through the TIIG website)
 Twitter: [@TIIG_CPH](https://twitter.com/TIIG_CPH)

¹ There was one assault attendance without a gender recorded

² There was one assault attendance without an age recorded